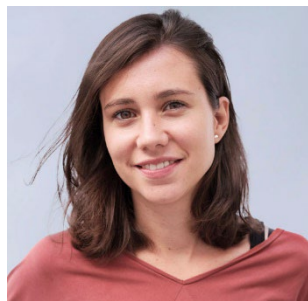


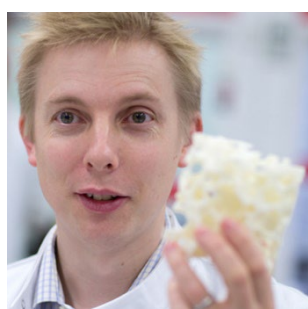
Keynote Speakers



Stéphanie Le Rhun

Eckersley O'Callaghan – Paris – France

Stéphanie Le Rhun is Global Sustainability Lead at Eckersley O'Callaghan. Stéphanie works closely with structures, facades and glass experts at Eckersley O'Callaghan on sustainable design.



Prof. Julian Jones

Imperial College London – London – United Kingdom

Julian Jones is a Professor of Biomaterials at Imperial College London. His research interests are in biomaterials for regenerative medicine, particularly Bioglass related materials.



Prof. Markus Feldmann

RWTH Aachen – Aachen – Germany

Markus Feldmann is Professor and Chair at the Institute of Steel Construction at RWTH Aachen. He is also the chair of the Eurocode CEN/TC 250/SC 11 committee on the Design of Glass Structures.



Robert Capel

Octatube – Delft – The Netherlands

In the role of sales lead, Robert Capel is involved in many early stage design work at Octatube. During his 15 years of professional experience he grew his design & build enthusiasm and enjoys to dissect engineering challenges to build special envelopes and structures.



Iris Rombouts

Octatube – Delft – The Netherlands

Iris Rombouts has 7 years of experience as a structural engineer and projectmanager at Octatube. She's passionate about complex glass and steel structures and always in for new design challenges. Iris has worked on various exciting and high-profile projects.

Platinum Sponsors

The Eastman logo, consisting of the word 'EASTMAN' in a bold, red, sans-serif font.

Gold Sponsors

The Bellapart logo, featuring the word 'Bellapart' in a bold, blue, sans-serif font.The kuraray logo, featuring the word 'kuraray' in a blue, sans-serif font.The Trosifol logo, featuring the word 'Trosifol' in a black, sans-serif font with a registered trademark symbol.The SentryGlas logo, featuring the word 'SentryGlas' in a black, sans-serif font with a registered trademark symbol.The sedak logo, featuring the word 'sedak' in a bold, black, sans-serif font.

Silver Sponsors

The octatube logo, featuring the word 'octatube' in a bold, italicized, black, sans-serif font.The vitroplena structural glass solutions logo, featuring a blue stylized graphic of a building or structure above the text 'vitroplena structural glass solutions' in a black, sans-serif font.

Organising Partners

The TU/e logo, featuring the text 'TU/e' in a bold, red, sans-serif font.The TU Delft logo, featuring a black stylized graphic of a building or structure above the text 'TU Delft' in a bold, black, sans-serif font.